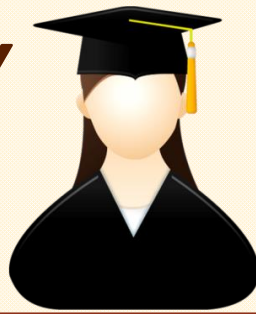


EXIT SURVEY

OF STUDENT TEACHERS



AY 15-16
QUICK FACTS

AU ADELPHI UNIVERSITY®

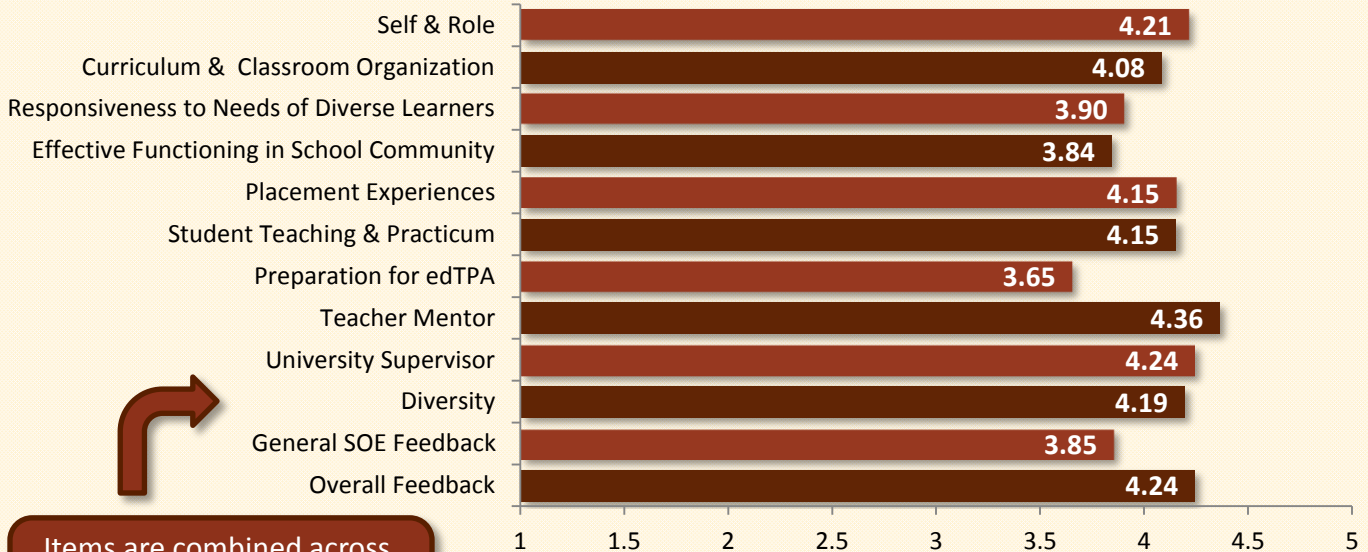
RUTH S. AMMON SCHOOL OF EDUCATION

Office of Assessment & Research

November 2016

Source: 2015-16 Ruth S. Ammon School of Education student teachers completed an exit survey at the end of their program. These data are based on responses to that survey. 121 of 175 student teachers responded to the survey for a 69% response rate (up from 65% the prior year).

Category Means



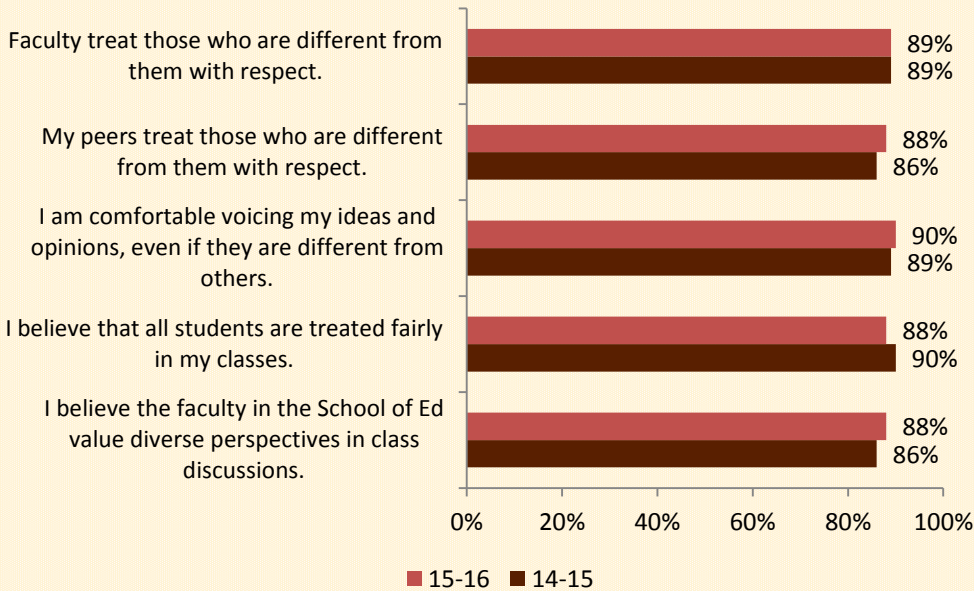
Items are combined across categories to show a composite score.

Students respond to statements on a 1 (Strongly Disagree) to 5 (Strongly Agree) scale.

TOP 5: HIGHEST RATED ITEMS

- 1 I received constructive feedback from the Teacher Mentor. (M=4.43)
- 2 During my Fieldwork experiences I was able to work with students directly. (M=4.36)
- 3 I was given adequate opportunity to prepare, administer, and grade student work assessments. (M=4.36)
- 4 The Teacher Mentor was open to my suggestions related to curriculum or instruction. (M=4.34)
- 5 University supervisors provided prompt feedback and responses to my questions. (M=4.34)

DIVERSITY AT ADELPHI'S AMMON SCHOOL OF EDUCATION



“Working with diverse students, both culturally and academically, challenged me to create lesson activities that engaged on all levels of learning.”

90%
Say AU helped them understand the social and emotional needs of all students

97%
developed lessons for students with different learning styles

90%
Use 3 or more methods of incorporating diversity in their teaching practice

87%
use multiple methods of assessment to monitor learning progress

AMMON SCHOOL OF EDUCATION GRADS SAY...

“I loved the people at Adelphi (both faculty and students) because they were so nice and caring. Classes were small and intimate, which was good because I got to know everyone well.”

“Adelphi helped me grow as a caring and reflective teacher. I learned how to better interact and engage with students when I am in the front of the classroom. I feel very prepared to instruct and assess students on a daily basis.”

“Professors were amazing and always open to help.”

“The camaraderie between my classmates and I provided a genuinely memorable experience where I grew as an educational professional.”